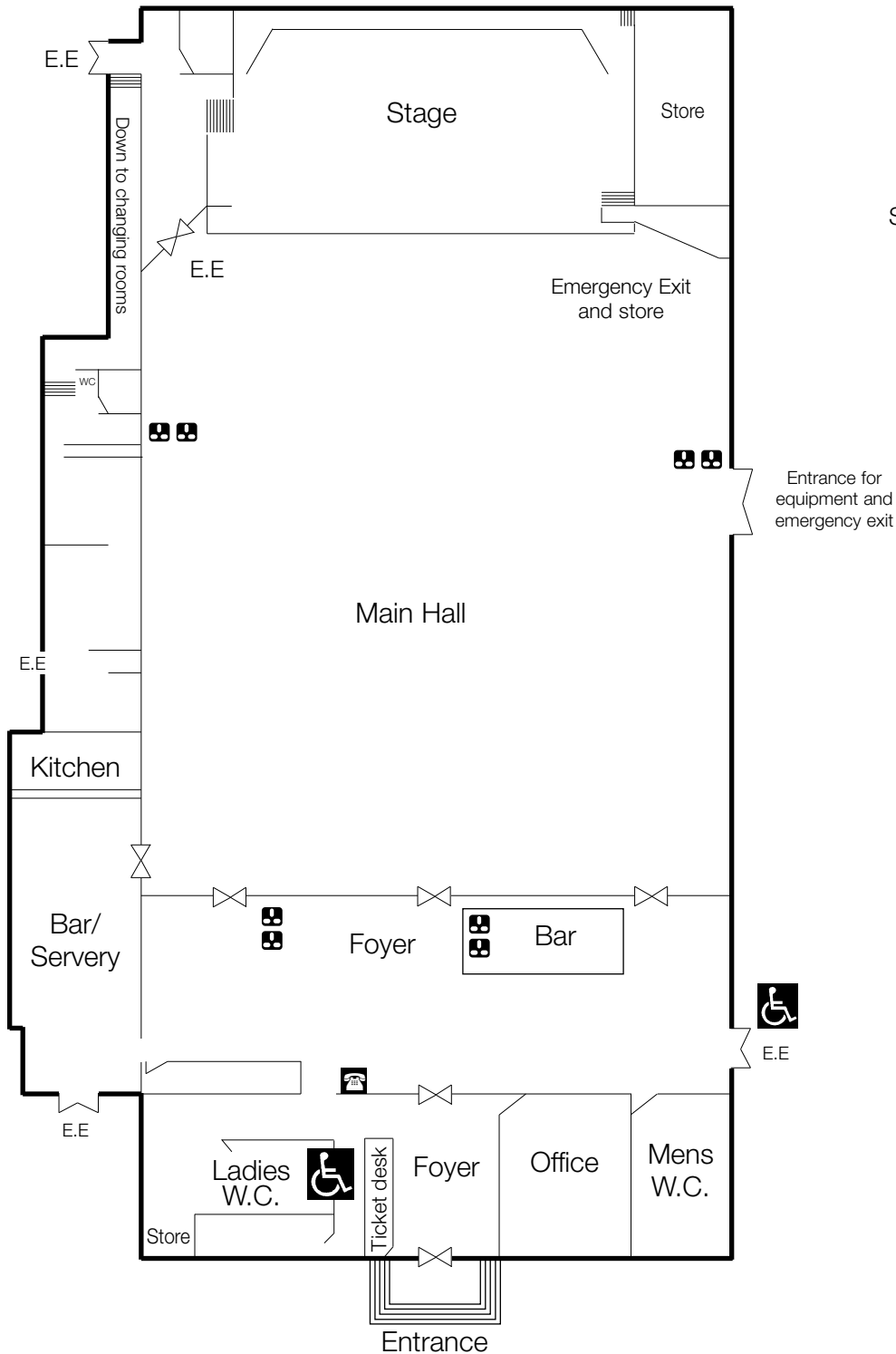




Bath Pavilion

floor plan



Main Hall Floor Area 98' x 70'
 (32.65m x 23.3m)
 Stage 50' x 26' 9" (15.2m x 8m)
 Minimum Height 15' (5m)
 Access: Entrance off North Parade Road

Entrance for equipment and emergency exit

Capacity
 Theatre Style 1,000
 Classroom 350
 Dinner (seated at rounds) 450
 Dance 1,000
 Pop Concert standing 1,400
 Exhibition 683 sq m



13A Sockets

E.E.

Emergency exits



Telephone point